

# TEAC

## SERVICE MANUAL

# PL-S3500

### Home Theater System



#### NOTES

- PC board shown are viewed from parts side.
- The parts with no reference number or no parts number in the exploded views are not supplied.
- As regards the resistors and capacitors, refer to the circuit diagrams contained in this manual.
- ⚠ Parts marked with this sign are safety critical components. they must be replaced with identical components - refer to the appropriate parts list and ensure exact replacement.
- Parts of [ ] mark can be used only with the version designated.  
[E]: EUROPE [J]: JAPAN  
[HK]: HONG KONG [UK]: U.K.

#### CONTENTS

<b>1 SPECIFICATIONS</b> .....	2
<b>2 EXPLODED VIEW AND PARTS LIST</b> .....	3
<b>3 PC BOARDS AND PARTS LIST</b> .....	7
<b>4 WIRING DIAGRAM</b> .....	15
<b>5 INCLUDED ACCESSORIES</b> .....	17

# PL-S3500

## 1 SPECIFICATIONS

### Amplifier Section

**Surround Output Power(0.9% THD, 1kHz, 8ohms):**

30 + 30 watts (Front)

30 watts (Center)

30 + 30 watts (Rear)

**Audio Input Sensitivity/Impedance :**

\* Line: 250 mV/47k ohms

**Frequency Response :**

\* Line: 20 Hz - 20 kHz, +1/ -3 dB

**Signal-to-Noise Ratio :**

\* Line: 65dB (IHF-A)

**Tone Control :**

BASS : +/- 10 dB at 100 Hz

TREBLE : +/- 10 dB at 10 kHz

### Digital Audio Section

**Sampling Frequency :**

32 kHz, 44.1 kHz, 48kHz, 96 kHz

**Digital Input Level/Impedance:**

Digital 1, 2 (OPTICAL): - 15 dBm ~ -21 dBm

Digital 3 (COAXIAL): 0.5 Vp-p/75 ohms

### General

**Power Requirements :**

230 V AC, 50 Hz (EUR/UK/HKG)

100 V AC, 60 Hz (DM)

**Power Consumption :**

200W

**Dimensions (W x H x D):**

435 x 70 x 365mm

(17-1/8 x 2-3/4 x 14-3/8) inches

**Weight(net) :**

4.2 kg (9.24)lb

**Standard Accessories :**

Remote Control Unit (RC-881) x1

Front/Center/Speaker Cable (5m x 3)

Surround Speaker Cable (10 m x 2)

Sub-woofer RCA pin cord (1.8m)

Batteries (AA, R6,SUM-3) x 2

\* LINE means CD/DVD, AUX and TV/VCR

● Improvements may result in specifications are features change without notice.

● Weight and dimensions are approximate.

● Illustrations may differ slightly from production model.

### Satellite Speakers

**Unit :**

75 mm

**Impedance :**

8 ohms

**Power Handling Capacity :**

30W

**Dimensions (W x H x D) :**

90 x 130 x 81mm

(3-3/5 x 5-5/16 x 3-3/16) inches

**Weight :**

0.8 kg (1.76 lb) - front

0.6 kg (1.32 lb) -rear

### Center Speaker

**Unit :**

65 mm x 2

**Impedance :**

8 ohms

**Power Handling Capacity :**

30 W

**Dimensions (W x H x D) :**

200 x 77 x 81 mm

(7-7/8 x 3-1/16 x 3-3/16) inches

**Weight :**

1.0 kg (2.2 lb)

### Subwoofer

**Unit :**

165mm

**Impedance :**

4 ohms

**Output Power:**

50 W

**Signal-to-Noise Ratio :**

60 dB (80 Hz, 400 mV, STO)

**Power Requirements :**

230V AC , 50Hz (EUR/UK/HKG)

100V AC , 60Hz (DM)

**Dimensions (W x H x D) :**

200 x 315 x 353 mm

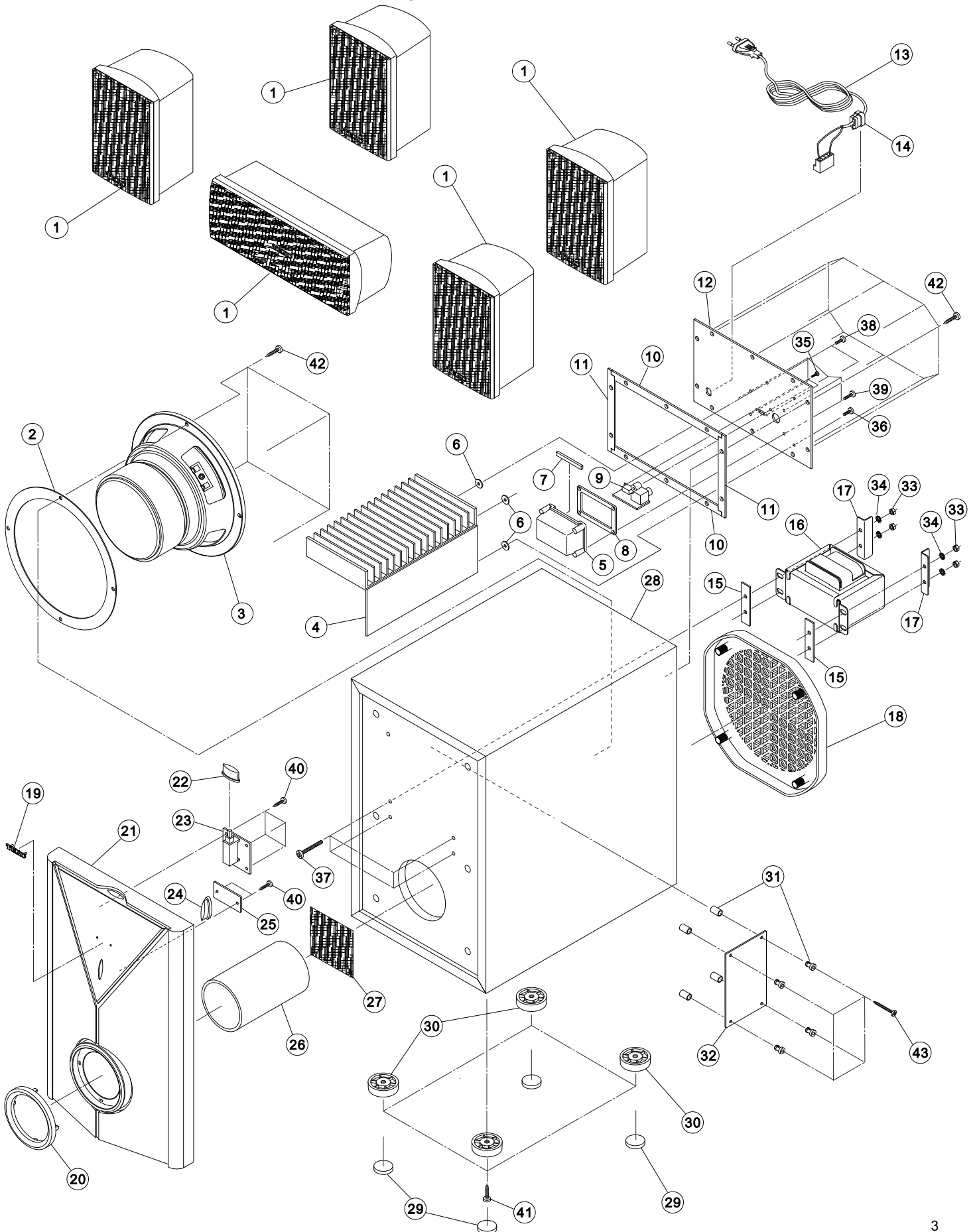
(7-7/8 x 12-7/16 x 13-7/8) inches

**Weight :**

8.2 kg (18.04 lb)

## 2 EXPLODED VIEWS AND PARTS LIST

### EXPLODED VIEW - 1

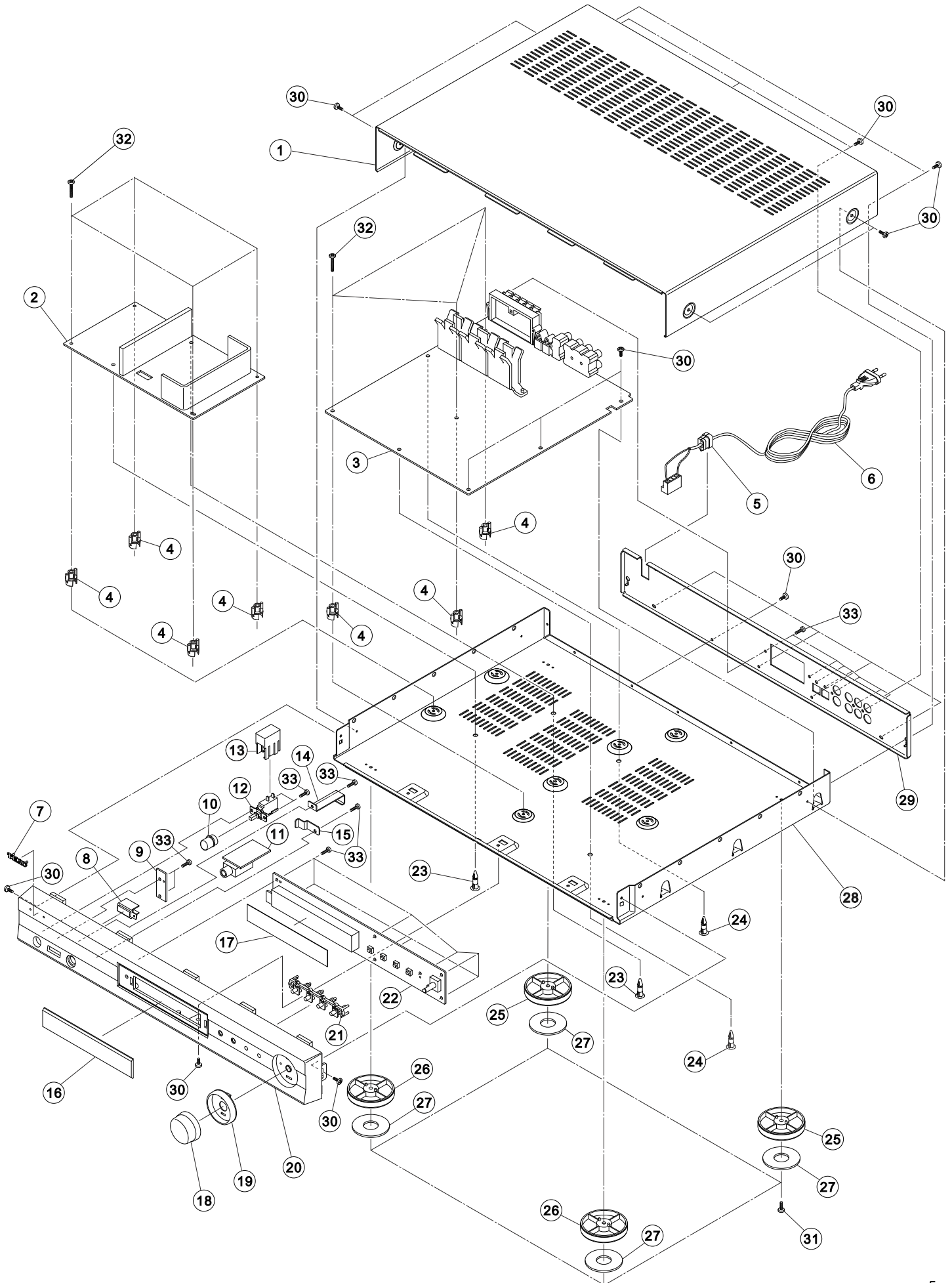


# PL-S3500

## EXPLODED VIEW - 1





REF. NO	PARTS NO.	DESCRIPTION	REMARKS
1-1	ESB20A501-0602	SATELLITE SPEAKER 5x30W	
1-2	IVE000097-0001	SPEAKER SPONGE 165x145x2mm	
1-3	FSB52A065-6401	SPEAKER	
1-4	APE100180-0008	MAIN PCB ASSY [SUBWOOFER]	
1-5	BPC000021-0001	REAR COVER	
1-6	HWF11C035-6160	WASHER FIB 12x3.5x1.6mm	
1-7	IVE000096-0002	COVER SPON L34xW4.5xT3mm	
1-8	IVE000095-0001	COVER SPON L55xW36xT2MM	
1-9	APE100180-0024	I/P PCB ASSY [SUBWOOFER]	
1-10	IVE000093-0001	SPONGE L174xW10xT2mm	
1-11	IVE000094-0001	SPONGE L94.5xW10xT2mm	
1-12	GSP100062-0006	BACK PANEL 230V [E, UK, HK]	
	GSP100062-0004	BACK PANEL 110V [J]	
1-13	△ VPE003252-0010	LINE CORD 2P VDE [E]	
	△ VPE006252-0020	LINE CORD 3P BS [UK, HK]	
	△ VPA002254-0020	LINE CORD 3P T-MARK [J]	
1-14	△ DBU001002-0011	AC LINE BUSHING	
1-15	BRB100028-0002	RUBBER PAD 50x25xT2mm	
1-16	△ TTI123011-0010	PWR TRANS 230V/50Hz EI-76 [E, UK, HK]	
	△ TTI110011-0010	PWR TRANS I/P 100V/60HZ EI-76 [J]	
1-17	GSE000110-0004	TRANSFORMER BRACKET	
1-18	BPG001046-0001	GRILLE	
1-19	BPL010014-0007	LOGO PLATE	
1-20	BPH100076-0001	RING	
1-21	BPF105041-0001	FRONT PANEL	
1-22	BPK106037-0001	POWER KEY	
1-23	APE200220-0001	SW+LED PCB ASSY	
1-24	BPN100106-0001	LED LENS	
1-25	APE200222-4001	LED PCB ASSY [SUBWOOFER]	
1-26	DPP216556-2001	PAPER TUBE 65x56.5x120mm	
1-27	IVN000005-0001	CLOTH 130x130mm BLACK	
1-28	EVM200003-0001	WOOD CAB BOX	
1-29	BRF100026-0001	RUBBER PAD 20xT4	
1-30	BPE100019-0001	PLAS. FOOT 32xT8.5	
1-31	DSS100004-0003	SPACER 6.7x3.1x9.9mm	
1-32	APE200250-5001	POWER PCB ASSY -SUBWOOFER [E, UK, HK]	
	APE200250-5002	POWER PCB ASSY - SUBWOOFER [J]	
1-33	HNT140700-1300	NUT M4	
1-34	HWS11A047-3030	WASHER 10x4.7x0.3mm	
1-35	HSP143053-3060	SCREW M2x6mm	
1-36	HST143084-3080	SCREW 3xx8mm	
1-37	HST140054-3080	SCREW T3x8mm	
1-38	HST140054-3100	SCREW T3x10mm	
1-39	HSD143103-3250	SCREW M4x25mm	
1-40	HST140044-3080	SCREW T2.5x8mm	
1-41	HST140051-3140	SCREW T3x14mm	
1-42	HST140071-3140	SCREW T3.5x14mm	
1-43	HST140051-3220	SCREW T3x22mm	

## EXPLODED VIEW - 2



# PL-S3500

## EXPLODED VIEW - 2

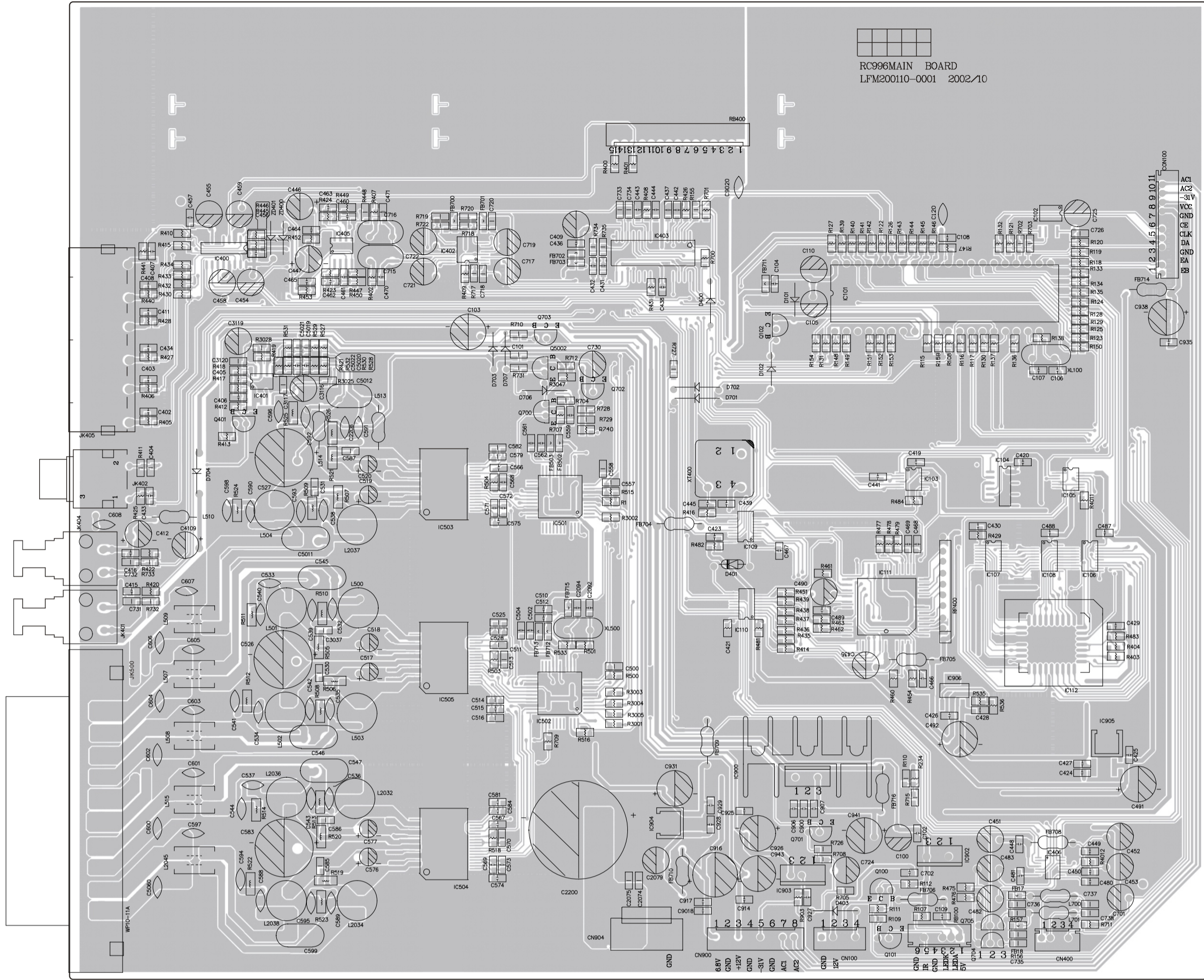
REF. NO	PARTS NO.	DESCRIPTION	REMARKS
2-1	GSE200025-0001	TOP COVER	
2-2	APE200290-5001	POWER PCB ASSY 230V [E, UK, HK]	
	APE200290-5004	POWER PCB ASSY 100V [J]	
2-3	APE200110-5001	MAIN PCB ASSY	
2-4	BPH00067-0001	PLASTIC BRACKET	
2-5	 DBU001005-0010	AC LINE BUSHING	
2-6	 VPE003252-0010	LINE CORD 2P VDE [E]	
	 VPE006250-0020	LINE CORD 3P BS [UK, HK]	
	 VPA002254-0020	LINE CORD 3P T-MARK [J]	
2-7	BPL010014-0007	LOGO PLATE	
2-8	BPN100105-0001	REMOTE LENS	
2-9	APE200123-4001	SENSOR PCB ASSY	
2-10	BPK208004-0001	POWER KEY	
2-11	APE200122-4001	EARPHONE PCB ASSY	
2-12	MSW003019-0010	POWER SW	
2-13	BPC000042-0002	SW COVER - POWER SW PROTECTOR	
2-14	GSE200024-0001	BRACKET SECC T=0.8mm	
2-15	GSE200036-0001	HEADPHONE BRACKET	
2-16	BPN100102-0001	DISPLAY LENS	
2-17	BFT211000-0001	LCD FILTER PVC	
2-18	BPK238004-0001	VOLUME KNOB DISPLAY LENS	
2-19	BPK228004-0001	BRACKET	
2-20	BPF104022-0001	FRONT PANEL	
2-21	ASW100002-0001	FUNCTION KEY	
2-22	APE200121-5001	CONTROL CHASSIS PCB ASSY	
2-23	DSS100022-0002	SPACER A=12.7 B=1.2-1.6mm	
2-24	DSS100022-0001	SPACER A=10 B=1.2-1.6mm	
2-25	BPE100018-0001	FOOT HIPS	
2-26	BPE100018-0002	FOOT CHROME	
2-27	BRB200002-0001	RUBBER	
2-28	GSE100195-0001	BOTTOM CAB	
2-29	GSE100194-0001	BACK CAB [E, UK, HK]	
	GSE100194-0002	BACK CAB [J]	
2-30	HST143084-1060	SCREW M3x6mm	
2-31	HST143084-1080	SCREW M3x8mm	
2-32	HST143084-1160	SCREW M3x16mm	
2-33	HSP140054-1080	SCREW T3x8mm	

## 3 PC BOARDS AND PART LISTS

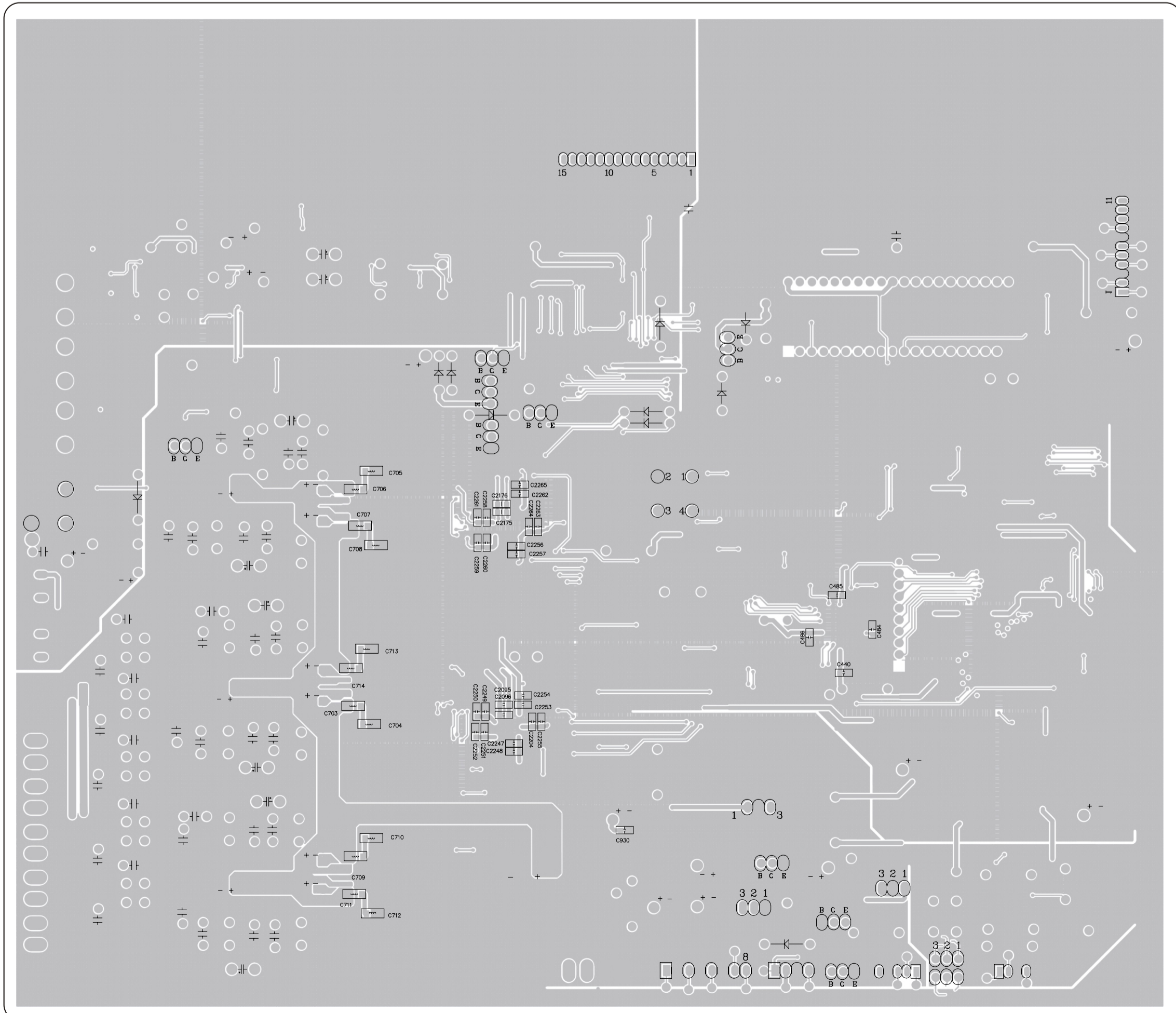
### MAIN PCB ASSY - TOP

REF. NO	PARTS NO.	DESCRIPTION	REMARKS
	APE200110-5001	MAIN PCB ASSY	
	LFM200110-0001	MAIN PCB	
C526,527,583	⚠ PDE039570-1020	CE - 1000UF-50V	
C916	⚠ PVE039540-1020	CE - 1000UF-16V	
C2200	⚠ PVE039570-2220	CE - 2200UF-50V	
CN100	CCN250000-0104	CONNECTOR B4B-XH-A 4PIN P=2.5MM	
CON100	CCN200000-0111	CONNECTOR 11PIN P=2MM	
CN400	CCN200000-0104	CONNECTOR 4PIN P=2MM	
CN900	CCN250000-0108	CONNECTOR B8B-XH-A 8PIN P=2.5MM	
CN904	CCN396020-0104	CONNECTOR 4PIN P=3.96MM	
D101,102,400,401,403, D701-703,706,707	RAD114148-0010	DIODE 1N4148	
FB17,18,502,503 FB700,701,711-713,715	SCB008050-1010	CHIP BEAD 100OHM	
FB704-706,708,709, FB710,714,716	SFB001001-0030	BEAD FERIT 100OHM	
IC101	RHI780516-0001	IC - W78E516B	
IC103,105	RCI740125-0005	IC - MC74LCX125DTR2	
IC104	RCI740004-0001	IC - TC74HC04AFN	
IC106,108	RCI740574-0002	IC - TC74LCX574FT	
IC107,109,110	RCI740245-0001	IC - TC74LCX245FT	
IC111	RCI049326-0001	IC - CS49326	
IC112	RCI270020-0002	IC - W27C020P	
IC401,405	RCI004558-0003	IC - RC4558D	
IC400	RCI004052-0001	IC - TC4052BFN	
IC402	RCI005333-0001	IC - CS5333	
IC403	RCI008415-0001	IC - CS8415A	
IC406	RCI043043-0001	IC - CS43L43	
IC501,502	RCI000304-0001	IC - STA304A	
IC503,504,505	RCI000505-0001	IC - STA505	
IC900	RHI007805-0005	IC - BA05T	
IC902	RHI007805-0001	IC - MC7805ACT	
IC903	RHI007912-0001	IC - 7912	
IC904,905	RCI916433-0001	IC - RT9164-33CLR	
IC906	RCI011170-0001	IC - B1117N	
JK401,404	CJT200001-0005	OPTICAL RECEIVER DLR1111	
JK405	CJR006101-0010	RCA JACK 6PIN	
JK500	CJS010101-0020	SPEAKER JACK 10PIN	
L500-504,L2032,2034, L2036-2038	SIL106002-2000	CHOKE COIL 20UH 2A	
L507-509,515,2045	SCB000001-0001	CHIP BEAD - 4PIN	
L510,513,514	SAN001600-1510	INDUCTOR 150UH	
L700,701	SAN001600-4700	INDUCTOR 47UH	
Q100-102,401,700-703	RAN200945-0001	TR - 2SC945	
Q704,705	RAM207000-1001	TR - 2N7000	
Q5002	RAP200733-0001	TR - 2SA733	
RB100	CCN20000-0106	CONNECTOR 6PIN P=2MM	
XL100	JQC213100-2461	CRYSTAL 24MHZ	
XT400	JQC223100-1261	OSCILLATOR 12.288MHZ	
XL500	JQC013100-6151	CRYSTAL 6.144MHZ	
ZD400,401,	RAZ005007-0020	ZENER DIODE 6.9-7.2V	

MAIN PCB - TOP



MAIN PCB - BOTTOM



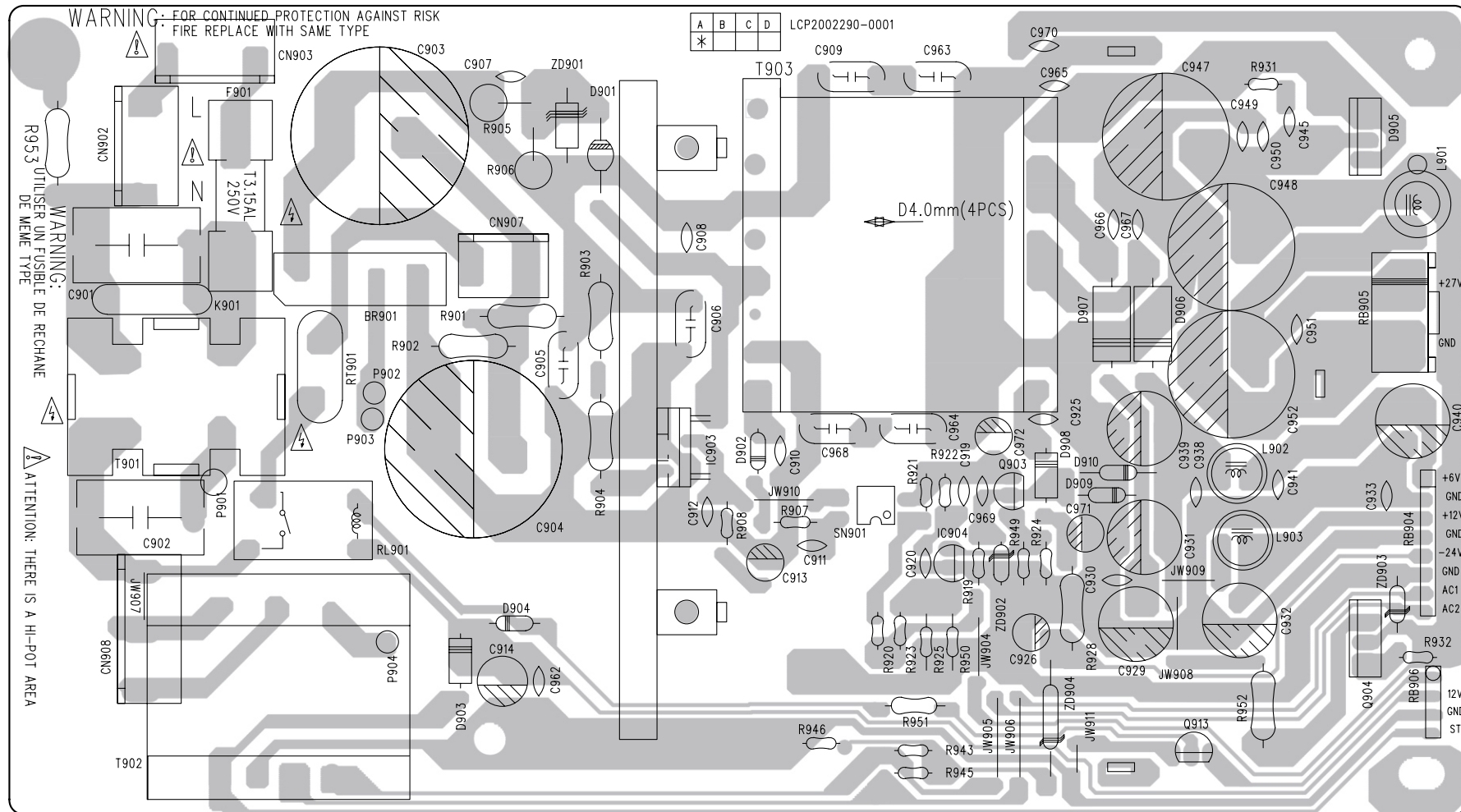


## POWER PCB ASSY

REF. NO	PARTS NO.	DESCRIPTION	REMARKS
	APE200290-5001	POWER PCB ASSY [E, UK, HK]	
	APE200290-5004	POWER PCB ASSY [J]	
	LCP200290-0001	POWER PCB	
BR901	⚠ RHD208080-0010	BRIDGE KBU808	
C901,902	⚠ PVX2705G0-2240	COND SAFTY 0.22UF 275V	
C903,904	⚠ PJE0995E0-2210	CE 220UF/200V	
C914	⚠ PME039550-4710	CE 470UF/25V	
C929,931	⚠ PVE039540-1020	CE 1000UF/16V - 10x16mm	
C932,939,940	⚠ PME039540-1020	CE 1000UF/16V	
C947,948,952	⚠ PVE039570-1020	CE 1000UF/50V	
C905,906,909, C963,964,968	⚠ PVY1705K0-2220	COND.SAFTY 0.0022UF 400V	
CN902,903	CCN396021-0104	CONNECTOR 4PIN P=3.96MM	
D901	RAD100026-0010	DIODE BYV26D	
D902,904,909,910	⚠ RAD114148-0010	DIODE 1N4148	
D903	⚠ RAD114001-0010	DIODE 1N4001	
D905	⚠ RHD208020-0010	BRIDGE MUR1620CT	
D906	⚠ RHD115822-0010	DIODE 1N5822	
D907,908	⚠ RAD100204-0010	DIODE HER204	
F901	⚠ KSA020315-0120	FUSE 3.15A/250V [E, UK, HK]	
	⚠ KSA020315-0011	FUSE 3.15A/250V [J]	
IC903	RHI000249-0001	IC - TOP249	
IC904	RHI004310-0001	IC - TL431	
L901	SIL106001-6090	INDUCTOR 6UH 10.5TS	
L902,903	SIL106002-6090	INDUCTOR 6UH 13.5TS	
Q903	RAN202222-0001	TR - PN2222A	
Q904	RHN000120-0001	TR - TIP120	
Q913	RAN202001-0001	TR - 2SC2001L	
R901,902	⚠ QAF025000-5640	RESISTOR - 560K 1/2W	
R903,904	⚠ QAF025000-1050	RESISTOR - 1M 1/2W	
R907	⚠ QAF045000-4790	RESISTOR - 4.7 OHM 1/4W	
RL901	⚠ MRL012004-0011	RELAY GJSH-112DM	
RT901	⚠ RNT005130-5090	NTC- 5 OHM	
SN901	⚠ RHO615003-3001	OPT SENSOR SFH615A-3	
T901	⚠ JFT006008-0020	AC FILTER	
T902	⚠ TTB123011-0020	POWER TRANS 230V EI-35 [E, UK, HK]	
	⚠ TTB110011-0020	POWER TRANS 100V EI-35 [J]	
T903	⚠ TSC023001-0040	PWR TRAN 230V [E, UK, HK]	
	⚠ TTI110011-0010	PWR TRAN 100V [J]	
ZD901	RAD160200-0010	DIODE P6KE200A	
ZD902	RAZ005006-0020	DIODE ZENER 5.6-5.9V	
ZD903	RAZ005007-0020	DIODE ZENER 6.9-7.2V	
ZD904	RAZ005004-0030	DIODE ZENER 4.1-4.3V	

# PL-S3500

## POWER PCB



## CONTROL PCB ASSY

REF. NO	PARTS NO.	DESCRIPTION	REMARKS
	APE200121-5001	CONTROL PCB ASSY	
	LVC200121-0301	CONTROL PCB	
D301,302	RAD114148-0010	DIODE -1N4148	
DP301	KLV000016-0010	VFD VA84x9PA	
IC303	RCI006311-0001	IC - PT6311	
LD201	KED200003-0010	LED RED - D3MM	
Q301	RAN200945-0001	TR - 2SC945	
TA301-303,305	MAW060001-0010	TACT SW SKHVBE3520	
VR301	MSW005002-0010	ROTARY L20xF7MM	
ZD201,202	RAZ005016-0010	DIODE ZENER 15.3V-15.9V	

## SENSOR PCB ASSY

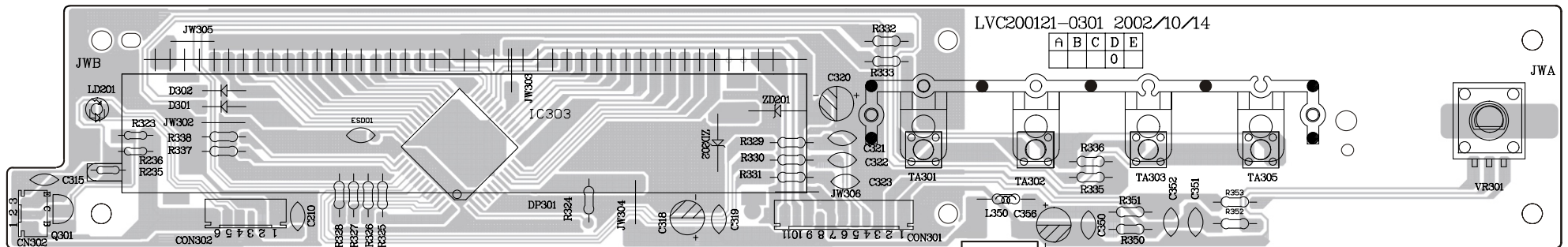
REF. NO	PARTS NO.	DESCRIPTION	REMARKS
	APE200123-4001	SENSOR PCB PCB ASSY	
	LVC200123-0301	SENSOR PCB	
RB302	CCN200000-0103	CONNECTOR 3PIN P=2MM	
SN201	RHO200038-0001	IRT SENSOR RIM B38F	

## EAR PHONE PCB ASSY

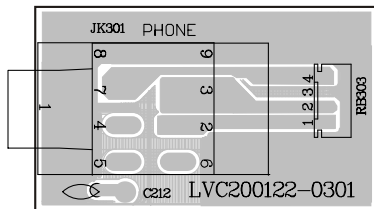
REF. NO	PARTS NO.	DESCRIPTION	REMARKS
	APE200122-4001	EAR PHONE PCB ASSY	
	LVC200122-0301	EAR PHONE PCB	
JK301	CJM064001-1010	PHONE JACK 9PIN	

# PL-S3500

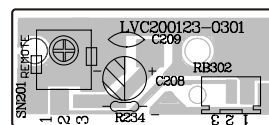
CONTROL PCB



EARPHONE PCB



SENSOR PCB



## MAIN PCB ASSY [SUBWOOFER]

REF. NO	PARTS NO.	DESCRIPTION	REMARKS
	APE100180-0018	MAIN PCB ASSY - SUBWOOFER	
	LVM100180-0011	MAIN PCB - SUBWOOFER	
C905,906	△ PVE039570-6820	CE 6800UF/50V	
CN301	CCN200000-0104	CONNECTOR 4PIN P=2MM	
CN351	CCN200000-0103	CONNECTOR 3PIN P=2MM	
CN401	CCN250000-0102	CONNECTOR B2B-XH 2PIN	
CN906	CCN396010-0103	CONNECTOR 3PIN P=3.96MM	
DB901	△ RHD204010-0011	BRIDGE RS402L	
D351,352	RAD114148-0010	DIODE 1N4148	
D504	△ RAD114001-0010	DIODE 1N4001	
F902,903	△ KSA020400-0121	FUSE 4A/250V	
IC351	RHI004558-0001	IC - JRC4558D	
IC401	RHI000740-0001	IC - TL074CN	
IC502	RHI003886-0001	IC -LM3886T	
Q351-353	RAN200945-0001	TR - 2SC945	
ZD501,901,902	RAZ005015-0020	DIODE ZENER 14.5-15.1V	
ZD502	RAZ005009-0020	DIODE ZENER 9.1V-9.5V	

## POWER PCB ASSY [SUBWOOFER]

REF. NO	PARTS NO.	DESCRIPTION	REMARKS
	APE200250-5001	POWER PCB ASSY -SUBWOOFER [E, UK, HK]	
	APE200250-5002	SUBWOOFER POWER PCB ASSY [J]	
	LVM100180-001	SUBWOOFER POWER PCB	
CN901,902	CCN396021-0104	CONNECTOR 4PIN P=3.96MM	
D353	RAD114148-0010	DIODE - 1N4148	
D354-356	△ RAD114001-0010	DIODE 1N4001	
F901	△ KSA020315-0120	FUSE 3.15A/250V [E, UK, HK]	
	△ KSA020315-0011	FUSE 3.15A/250V [J]	
Q354,355,357	RAN200945-0001	TR - 2SC945	
RL901	MRL012004-0011	RELAY GJ-SH-112DM	
T902	△ TTA123011-0010	PWR TRANS 230V-50HZ EI-28 [E,UK,HK]	
	△ TTA110011-0010	PWR TRANS 100V-50HZ EI-28 [J]	
ZD350	RAZ005011-0030	ZENER DIODE 11.1-11.6V	

## I/P PCB ASSY [SUBWOOFER]

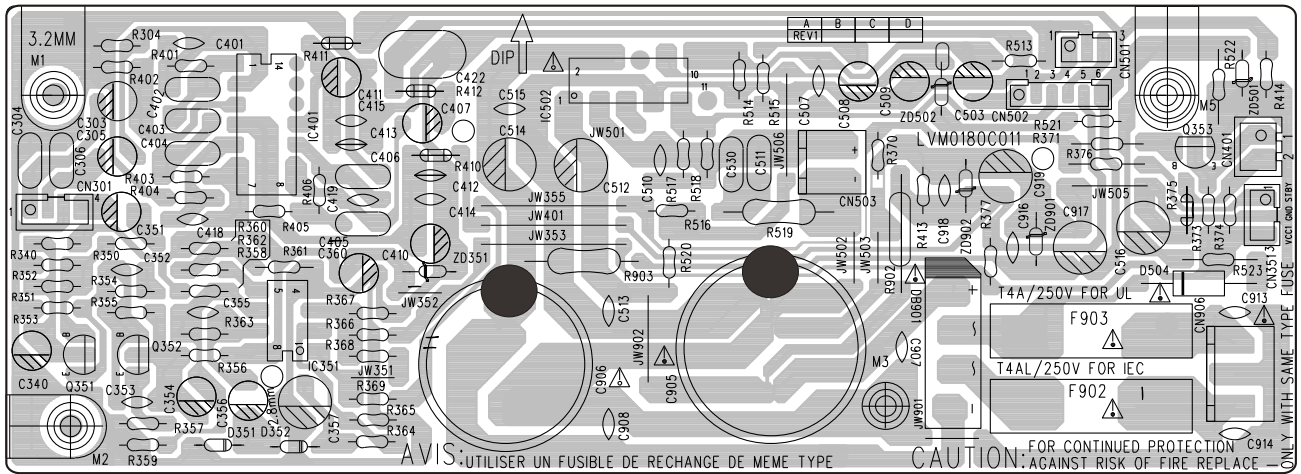
REF. NO	PARTS NO.	DESCRIPTION	REMARKS
	APE100180-0024	I/P PCB ASSY	
	LVM100180-0021	I/P PCB	
JK301	CJR001101-0010	RCA JACK 1PIN	
SW301	MSW004020-0010	SW SLIDE K22F24	

## LED PCB ASSY [SUBWOOFER]

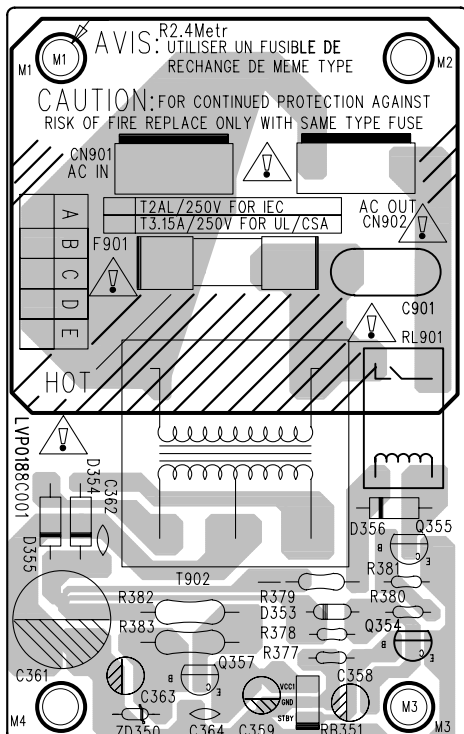
REF. NO	PARTS NO.	DESCRIPTION	REMARKS
	APE200222-4001	LED PCB ASSY	
	LVA200222-0601	LED PCB	
LD401	KED350003-0030	LED D3MM ORANGE/GREEN	

# PL-S3500

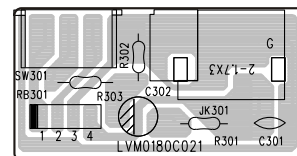
## MAIN PCB [SUBWOOFER]



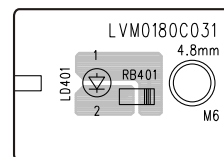
## POWER PCB [SUBWOOFER]



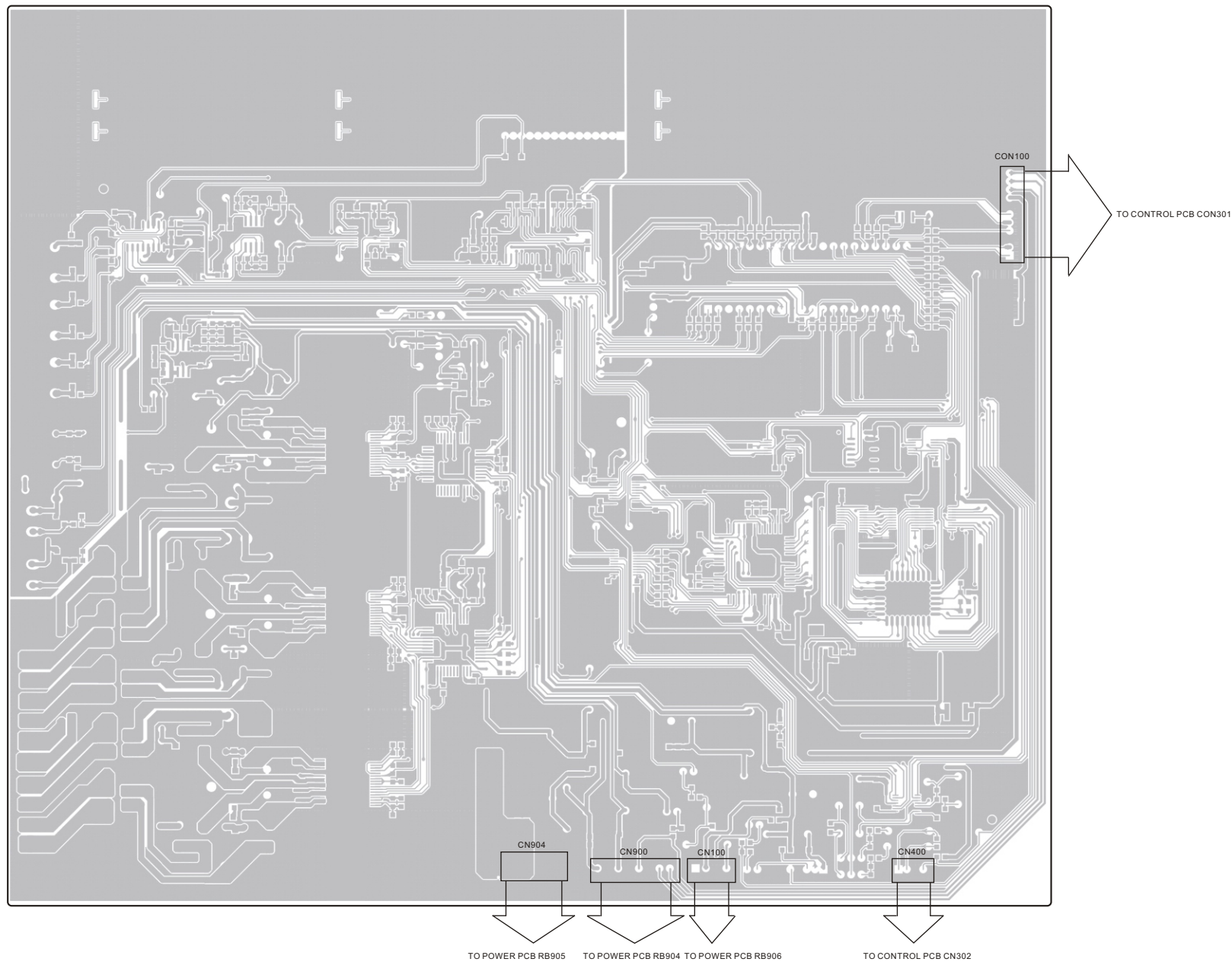
## I/P PCB [SUBWOOFER]



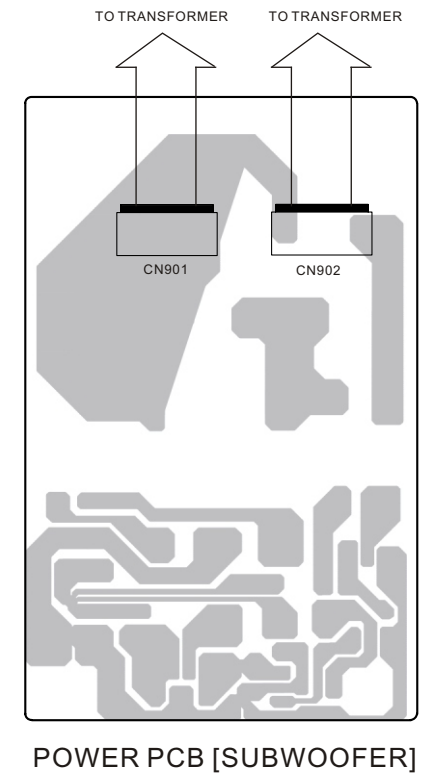
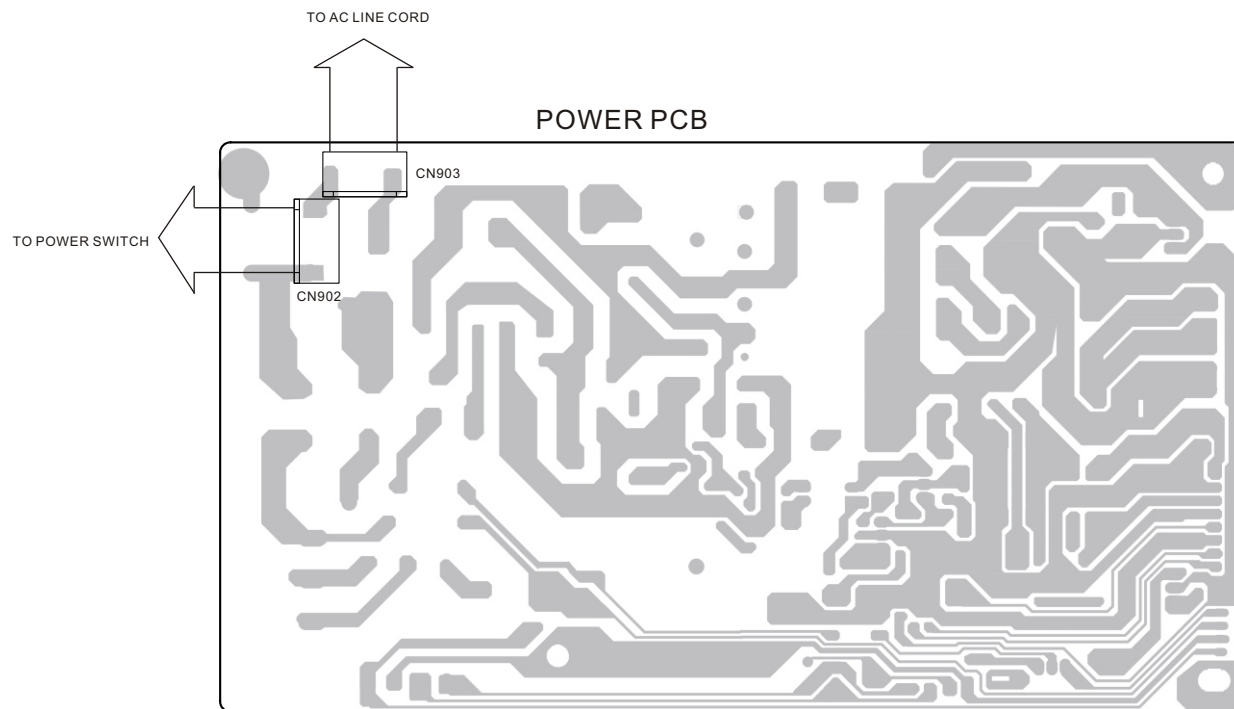
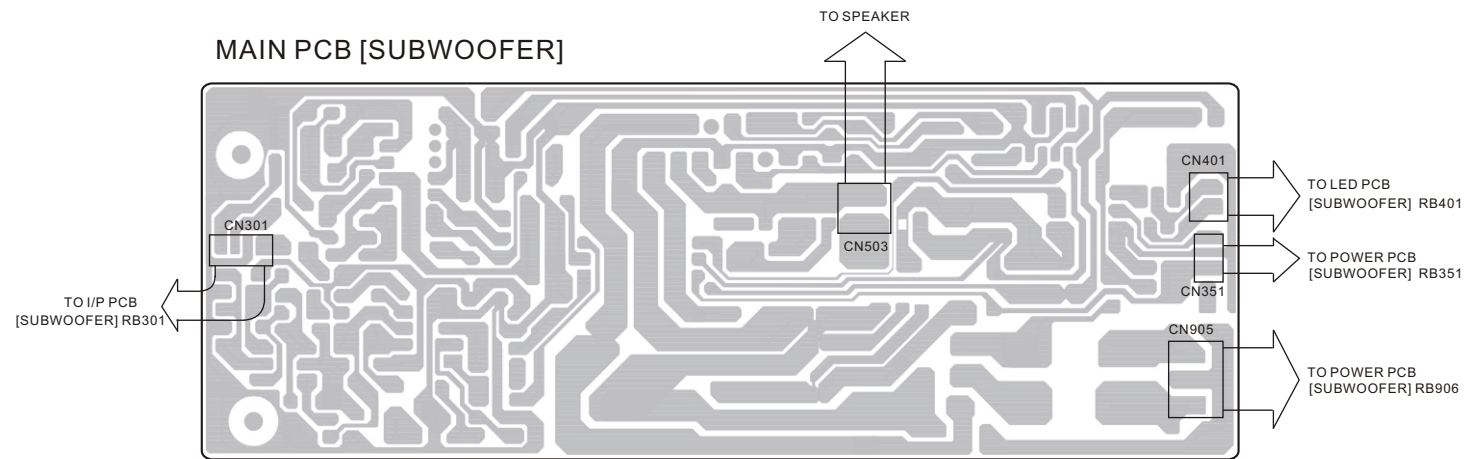
## LED PCB [SUBWOOFER]



## MAIN PCB - TOP



# PL-S3500





# PL-S3500

## 5 INCLUDED ACCESSORIES

### INCLUDED ACCESSORIES

REF. NO	PARTS NO.	DESCRIPTION	REMARKS
	YOM200005-0001	INSTRUCTION BOOK [E, UK, HK]	
	YOM200005-0002	INSTRUCTION BOOK [J]	
	AIR123015-3301	REMOTE CONTROLHT996 [E, UK, HK]	
	AIR123015-3304	REMOTE CONTROLHT996 [J]	
	VRC101003-0010	RCA CABLE	
	FBY006315-0003	BATTERY (AA, R6, UM-3)	

# PL-S3500

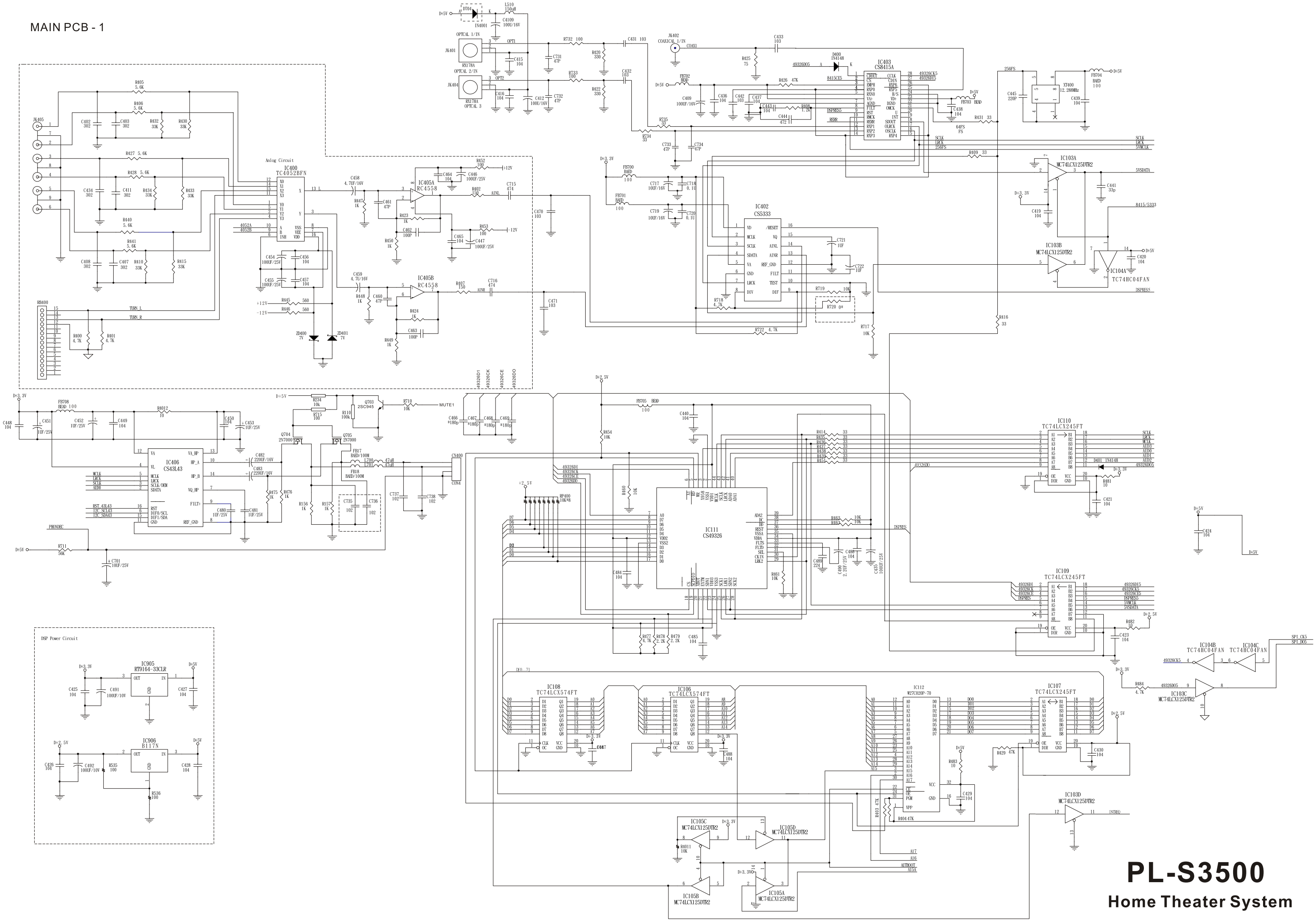
# TEAC

---

<b>TEAC CORPORATION</b>	3-7-3 Nakacho, Musashino-shi, Tokyo 180-8550, Japan Phone:(0422)52-5081
TEAC AMERICA, INC.	7733 Telegraph Road, Montebello, California 90640 Phone: (323)726-0303
TEAC CANADA LTD.	5939 Wallace Street, Mississauga, Ontario L4Z 1Z8, Canada Phone: (905)-890-8008
TEAC MEXICO, S.A.De C.V.	Campesinos 184,Col. Granjas Esmeralda, 09810, Mexico Phone: (525)-581-5500
TEAC UK LIMITED	5 Marlin House, Croxley Business Park, Watford, Hertfordshire, WD18 8TE, U.K. Phone: 01923-819699
TEAC DEUTSCHLAND GmbH	Bahnstrasse 12, 65205 Wiesbaden-Erbenheim, Germany Phone:0611-71580
TEAC FRANCE S.A.	17, Rue Alexis-de-Tocqueville, CE 005 92182 Antony Cedex, France Phone:(1)42.37.01.02
TEAC NEDERLAND BV	Oeverkruid 15,NL-4941 W Raamsdonksveer, Nederland Phone:0162-510210
TEAC BELGIUM NV/SA.	c/o TEAC NEDERLAND BV, Oeverkruid 15, NL-4941 W Raamsdonksveer, Nederland Phone:+31-162-510860
TEAC ITALIANA S.p.A.	Via C, Cantu 11, 20092 Cinisello Balsamo, Milano, Italy Phone:02-66010550
TEAC AUSTRALIA PTY., LTD.	280 William Street, Melbourne, VIC 3000, Australia Phone:(03)9672-2400
A.B.N.	80 005 408 462

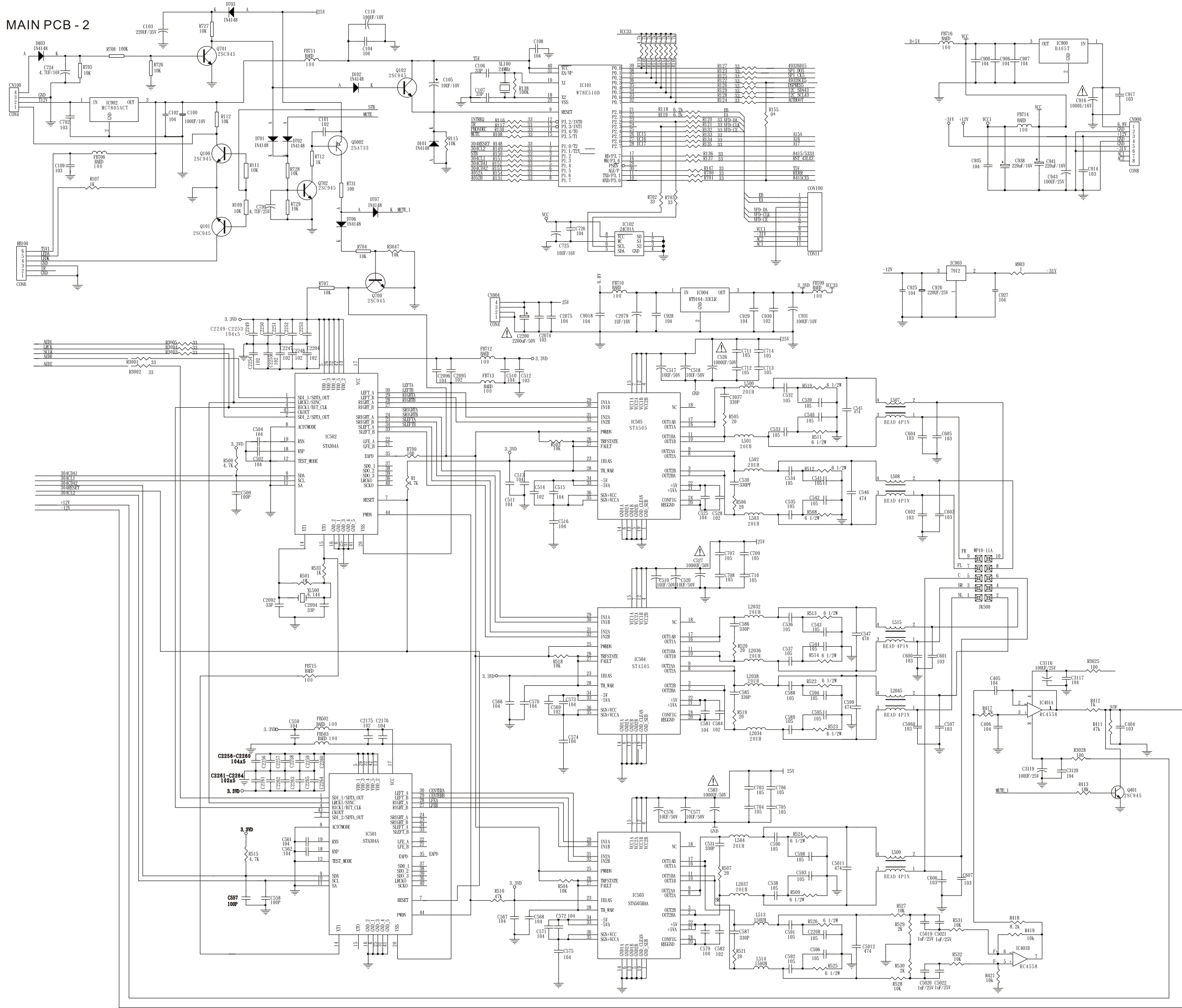
---

MAIN PCB - 1



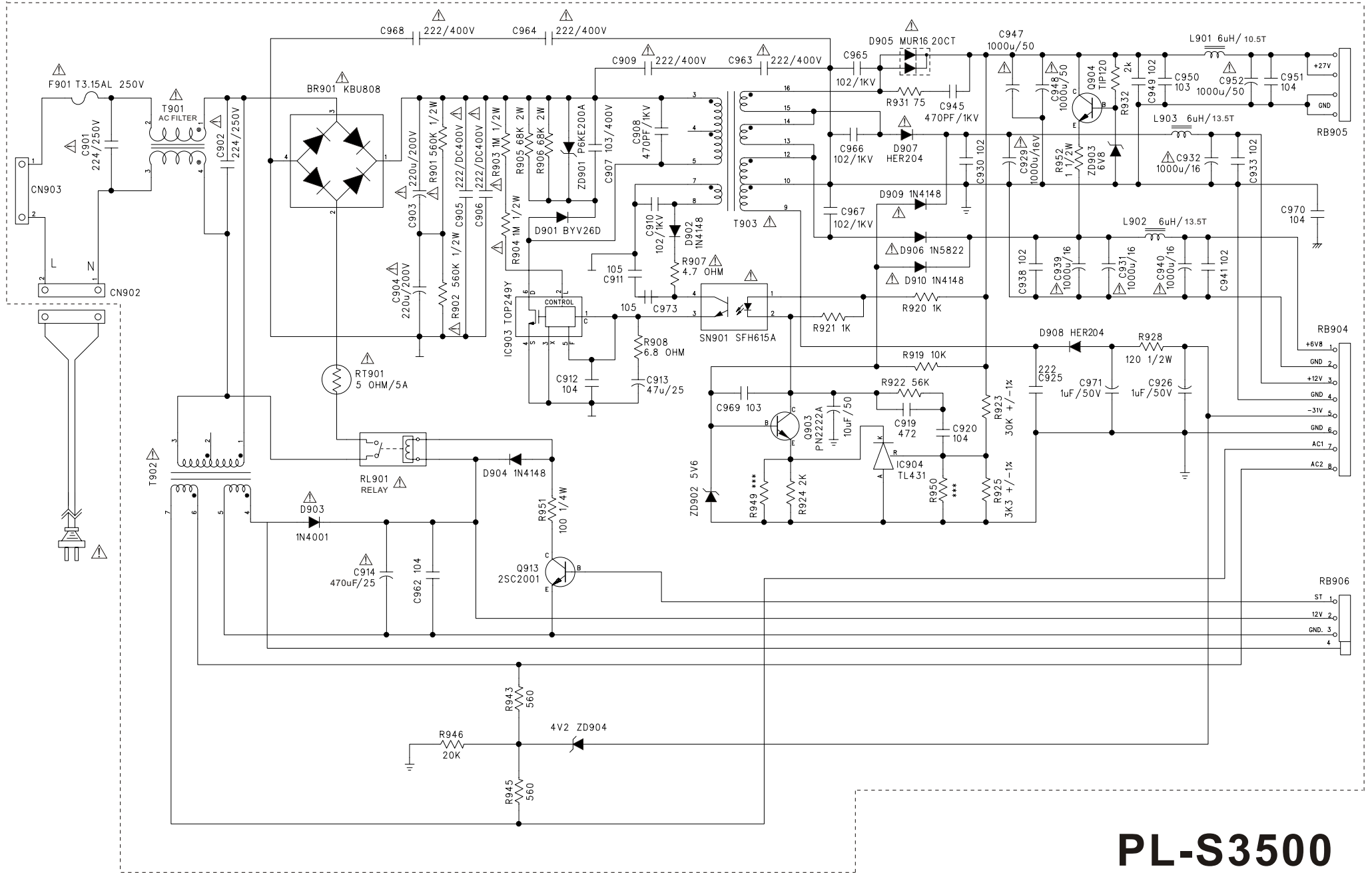
**PL-S3500**  
Home Theater System

MAIN PCB - 2



**PL-S3500**  
Home Theater System

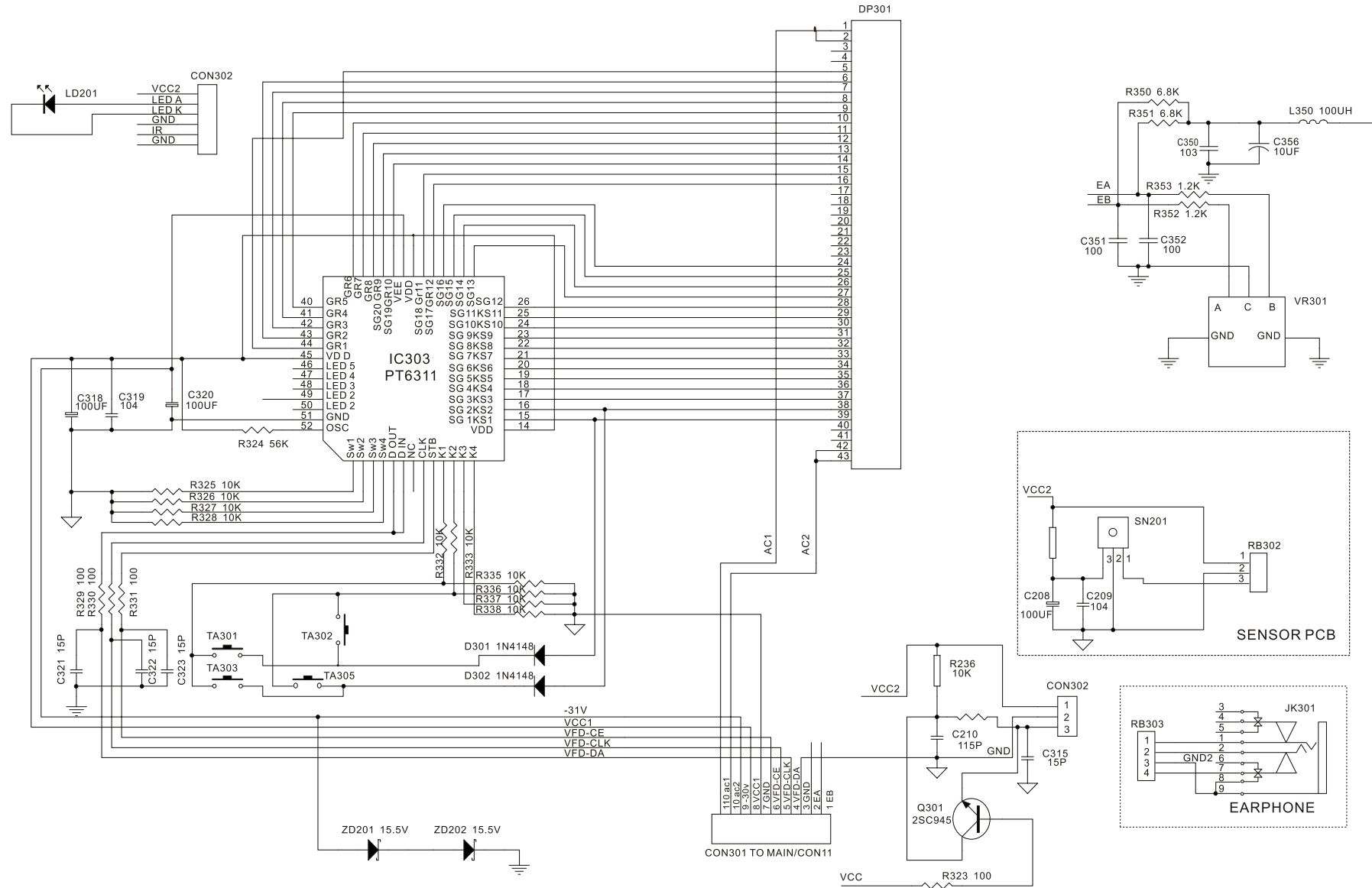
# POWER PCB



# PL-S3500

## Home Theater System

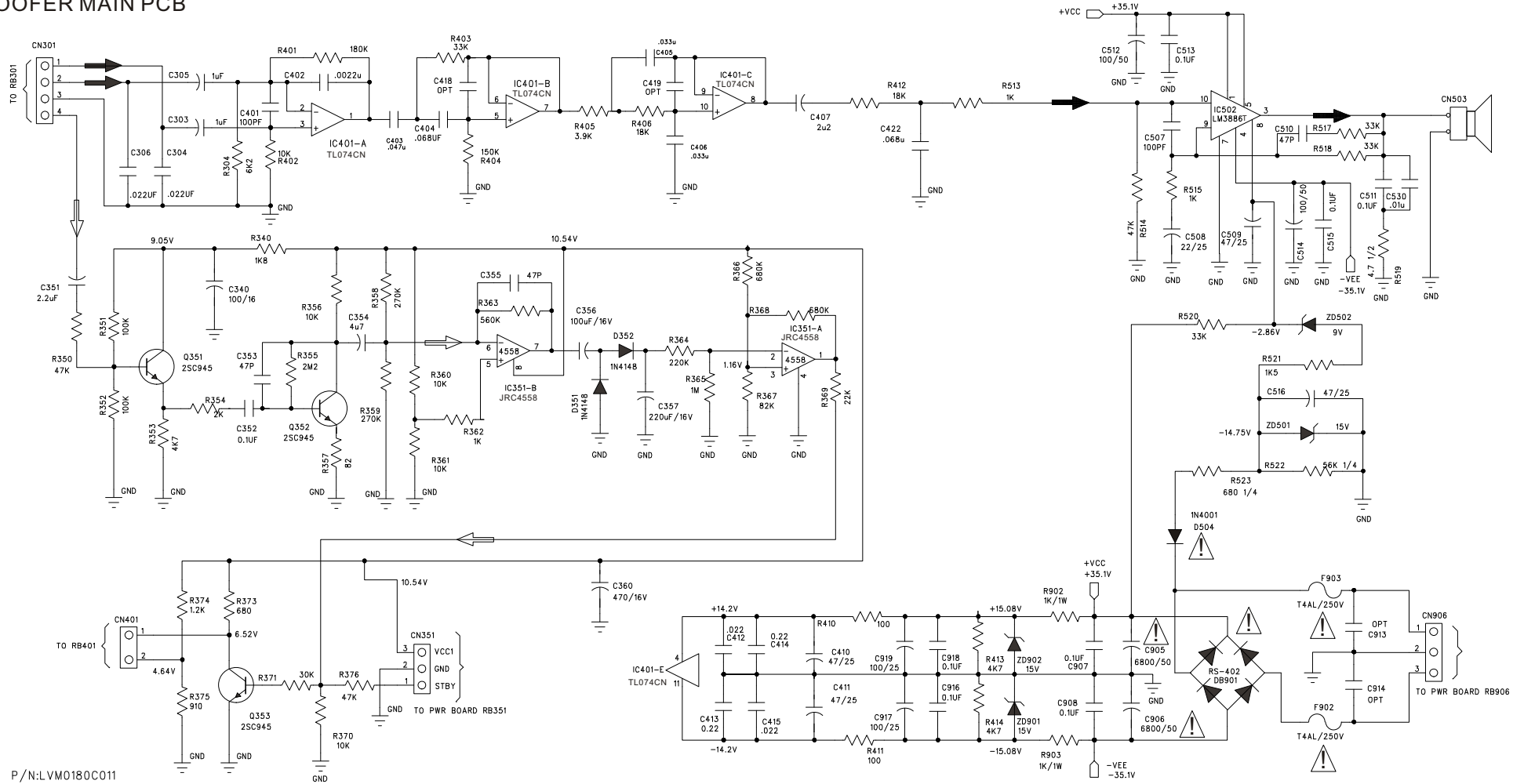
# CONTROL PCB



# PL-S3500

## Home Theater System

# SUBWOOFER MAIN PCB



P/N:LVM0180C011

## POWER AMP BOARD

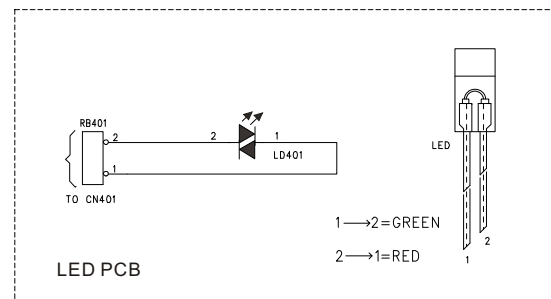
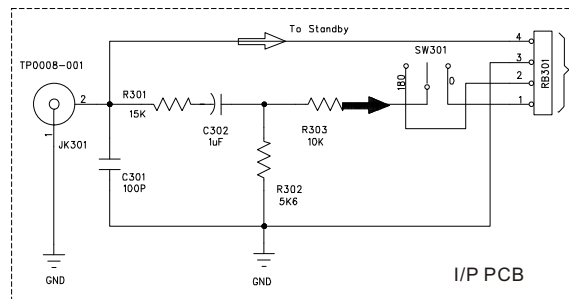
Standby Signal Path ⇨

Audio Signal Path →

PART NO:LVM0180C001



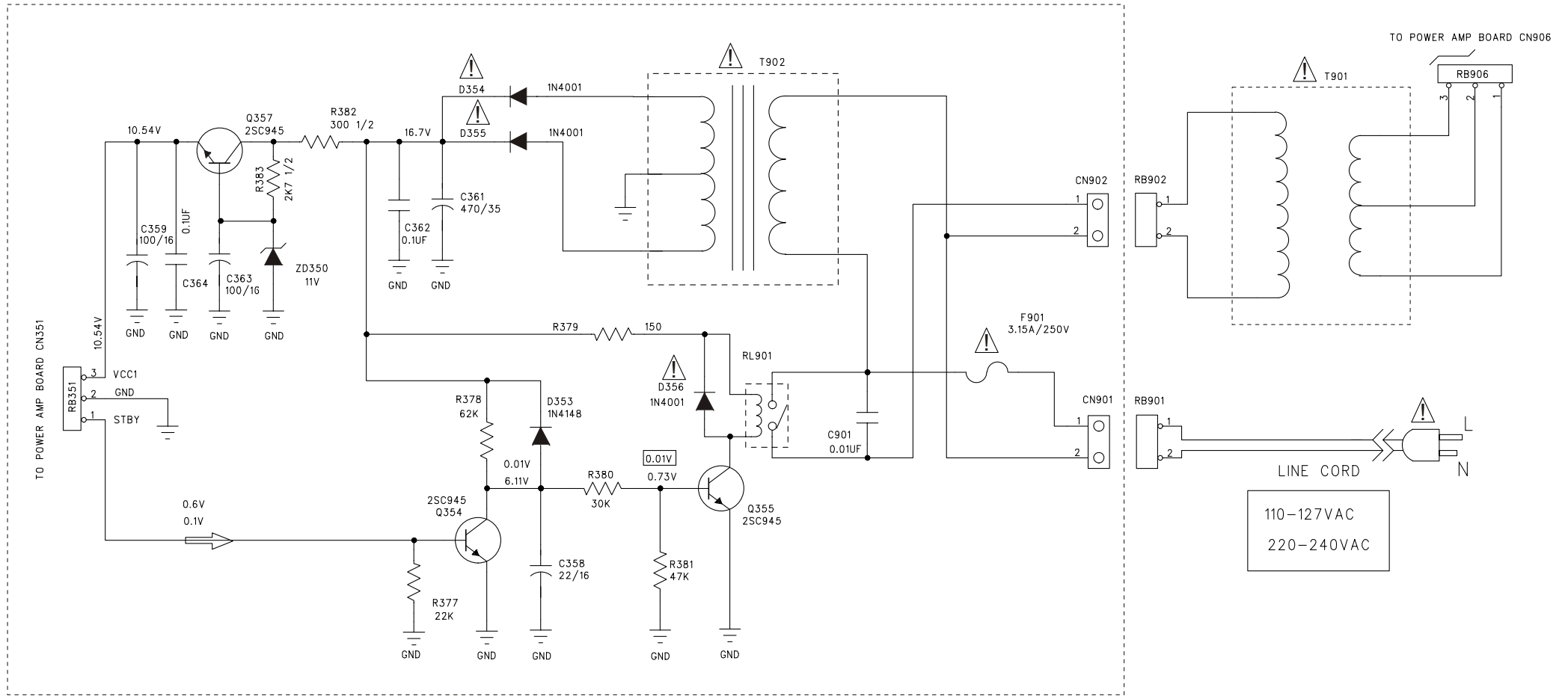
...V Measurement in no signal Mode(Stby:Off)



# PL-S3500

## Home Theater System

# SUBWOOFER POWER PCB



Standby Signal Path →

Voltages measured during operation

Voltages measured in ECO Mode(Stby:0n)

**PL-S3500**  
Home Theater System